

---

# TRANSITION OVERVIEW

for the  
User Group Annual Meeting

**Mike DALLAS**  
Chief Operating Officer  
June 14, 2006



Thomas Jefferson National Accelerator Facility



# Jefferson Science Associates - Background

---

- Competition As Catalyst For Transformation
- Results Of Incumbent Self Assessment:
  - Excellent science; construction project management
  - Room for improvement in operation and business management; efficiency in delivery of science
- Strategy – To Run A Competition To Identify Excellence In Operations And Business Management
  - Best-in-class company – CSC



# Jefferson Science Associates



**Building a New Approach to Large  
Scale Scientific Research**

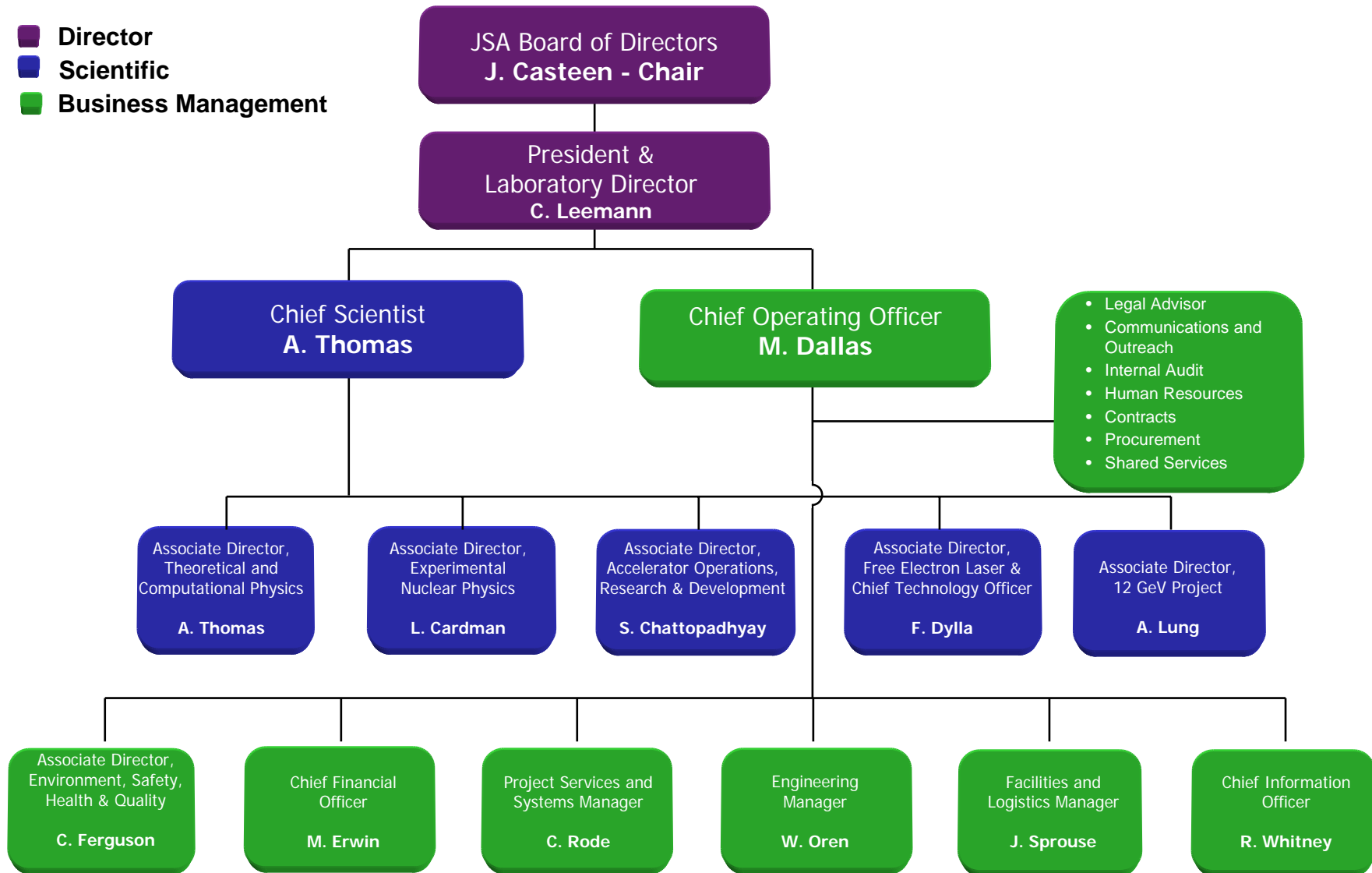


Thomas Jefferson National Accelerator Facility



# Organization Structure

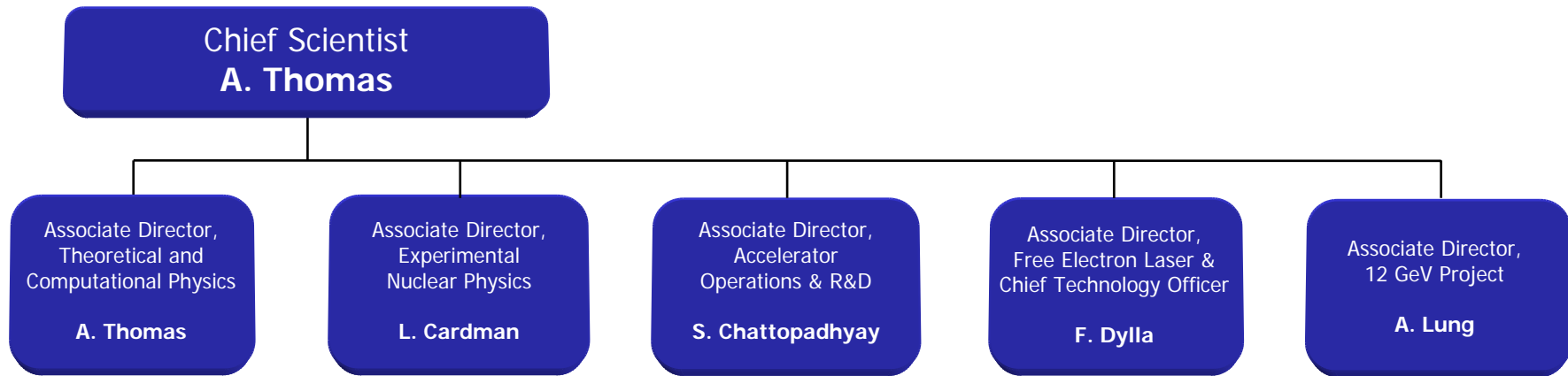
- Director
- Scientific
- Business Management



Thomas Jefferson National Accelerator Facility

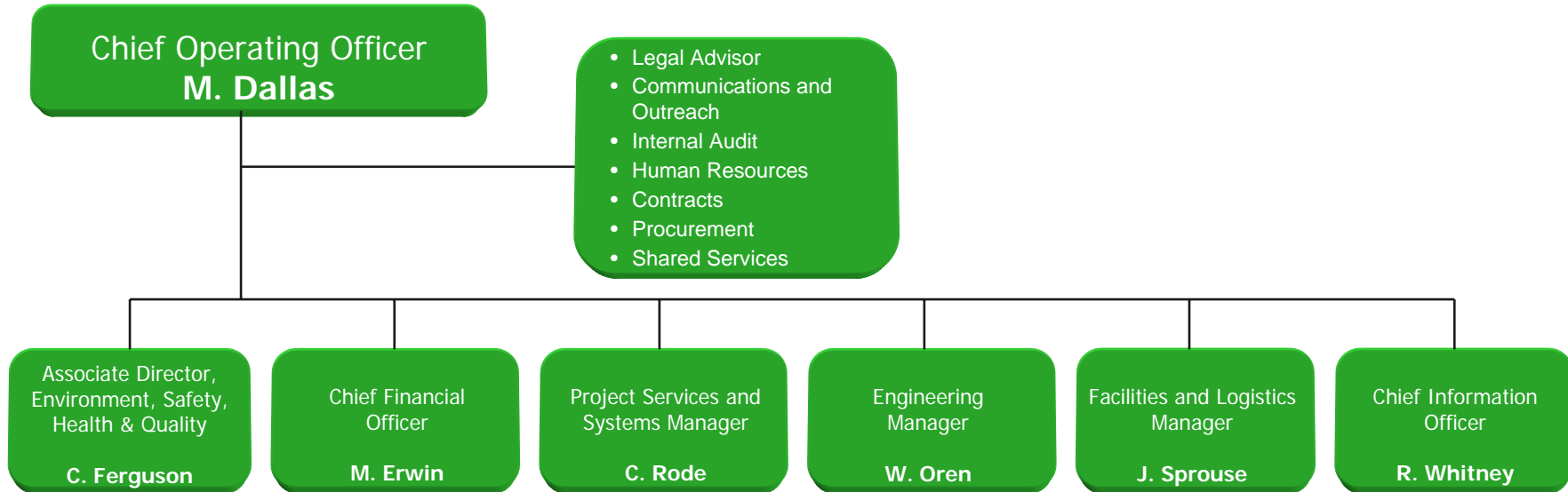


# Laboratory Organization - Science



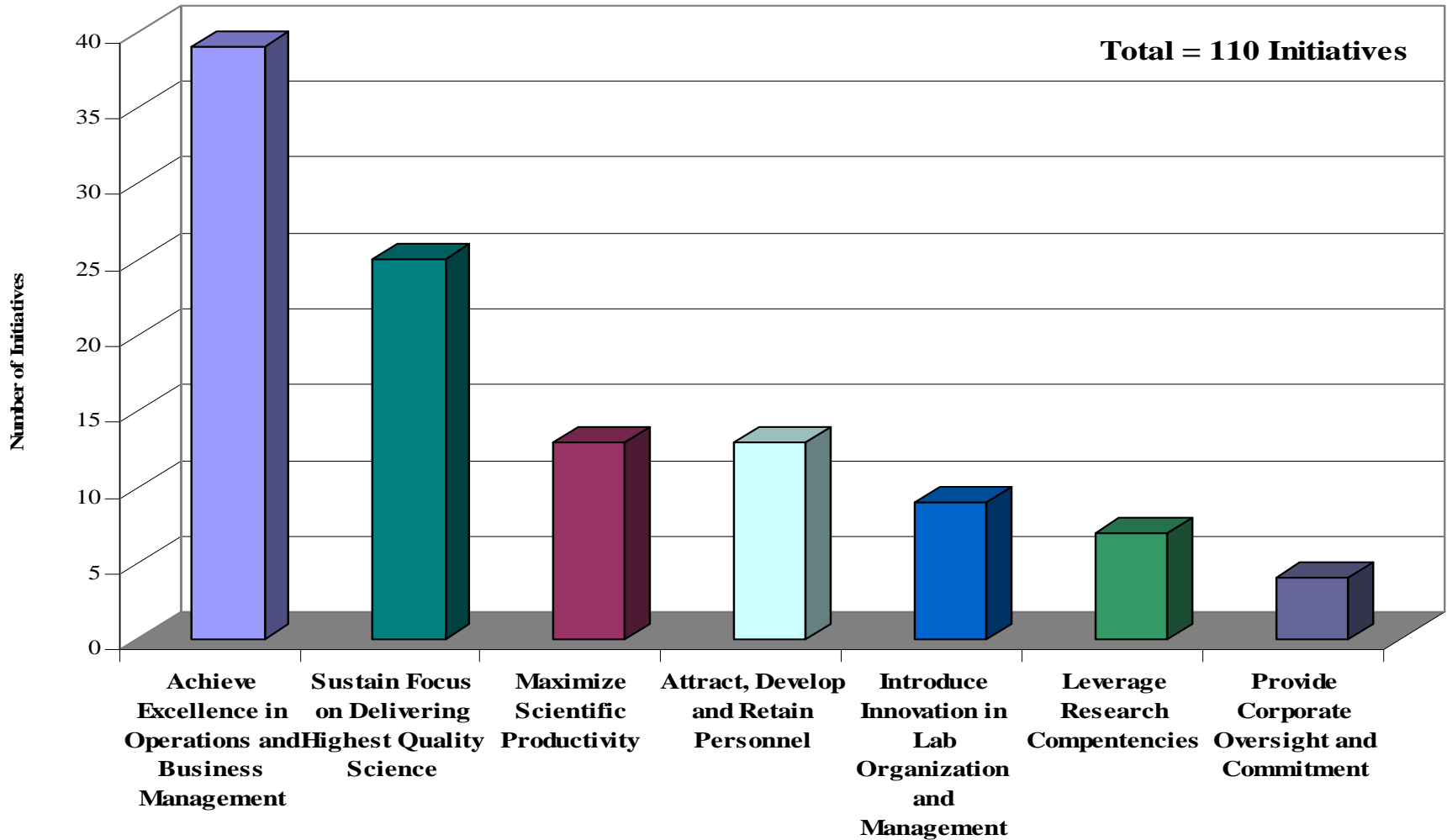
***Empowers Chief Scientist to provide overall direction for balanced, highest impact science***

# Laboratory Organization - *Operations*



***Empowers COO to integrate operations and business management functions to deliver highest impact science***

# JSA Proposal Initiatives



Thomas Jefferson National Accelerator Facility



# Performance Based Integrated Management System

## *Enhanced Project Management Discipline to All Areas of JLab*



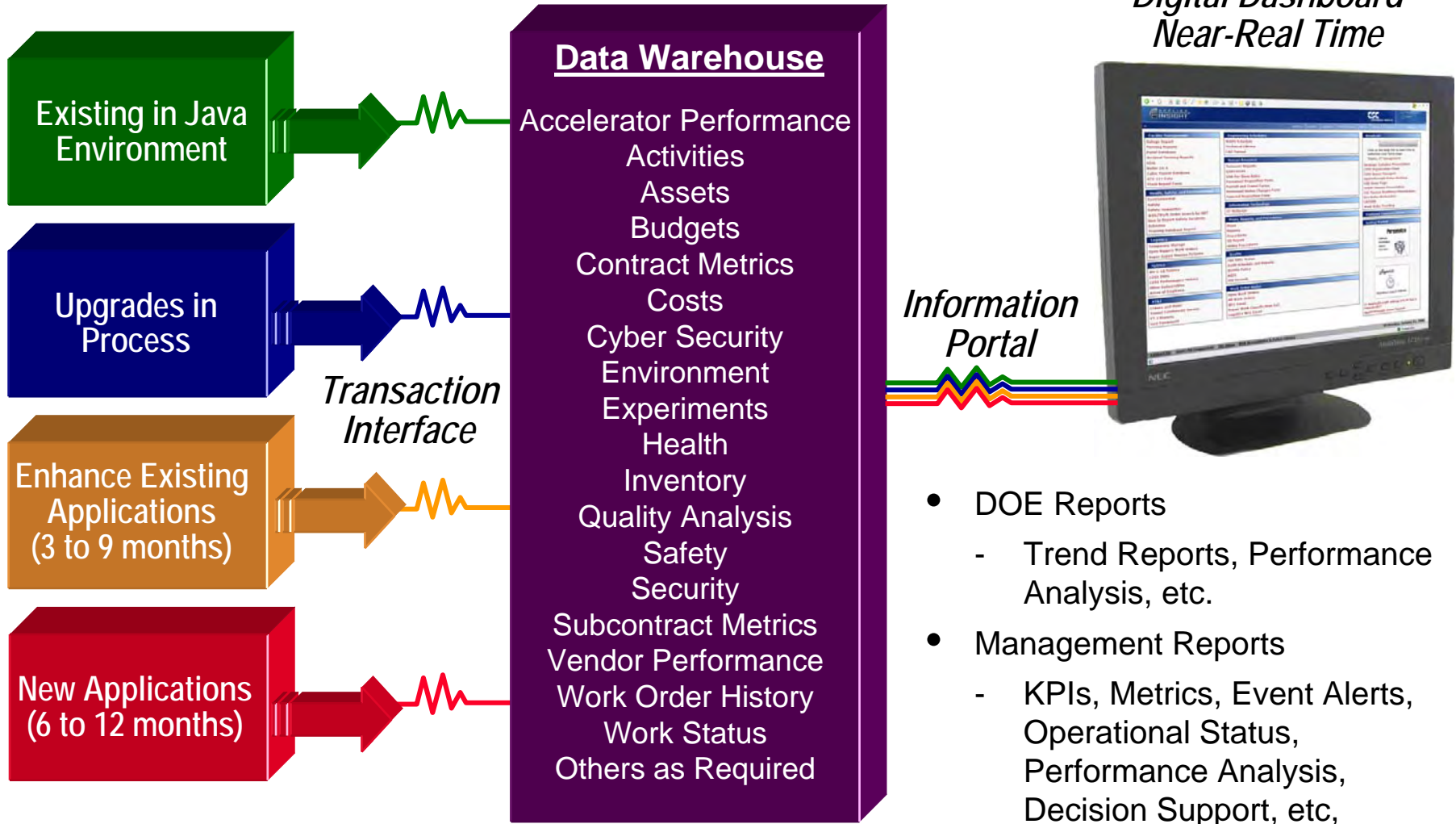
- Efficiencies Identified in Initial Planning Phase
- Menu Approach to the Application of Project Management Discipline
- Integration of ESH&Q Early and in Every Phase
- Full Accountability for Cost, Schedule, and Performance at Appropriate Levels
- Continuous Improvement



# Established and Proposed Management Systems

## *Integrating Applied Insight*

### Applied Insight — A Window on Performance



- DOE Reports
  - Trend Reports, Performance Analysis, etc.
- Management Reports
  - KPIs, Metrics, Event Alerts, Operational Status, Performance Analysis, Decision Support, etc.

# Summary



- JSA offers the achievement of a new level of performance and a breakthrough approach to managing large-scale scientific research
  - A governance model assuring success
  - Merging the proven strengths of two outstanding and diverse organizations
  - Key individuals of exceptional qualifications
  - Supported by best-in-class management systems, processes, and practices
  - Working together as a team focused on a sole objective: deliver for DOE the best possible science – safely, securely, and with high efficiency

---

# BACKUP



Thomas Jefferson National Accelerator Facility



# JSA Board of Directors and Committees

<p>CEO of VA Institution Granting Ph.D. in Physics</p> <p><b>John T. Casteen, Ph. D.</b> <i>President, University of Virginia</i></p> <p><i>Co-chair, Relations &amp; Outreach Committee</i> <i>Chair, JSA Board</i></p>	<p>Chief Executive of SURA</p> <p><b>Jerry P. Draayer, Ph. D.</b> <i>President &amp; CEO, SURA</i></p> <p><i>Chair, Compensation Committee</i></p>	<p>Eminent Scientist</p> <p><b>Thomas Appelquist, Ph.D.</b> <i>Professor of Physics, Yale University</i></p> <p><i>Chair, Science Council</i></p>	<p>User Institution Executive</p> <p><b>William R. Harvey, Ph.D.</b> <i>President, Hampton University</i></p> <p><i>Co-chair, Relations &amp; Outreach Committee</i></p>	<p>Former Government Executive/Lab Director</p> <p><b>Ernest J. Moniz Ph.D.</b> <i>Former Under Secretary of Energy</i></p>	<p>Member of SURA JLab Committee</p> <p><b>June L. Matthews, Ph.D.</b> <i>Dir., Laboratory for Nuclear Science, MIT</i></p> <p><i>Chair, Programs Committee</i></p>
<p>Chief Executive, CSC Applied Technology Division</p> <p><b>Lawrence H. Hare, Ph.D.</b> <i>President, CSC Applied Technology Div.</i></p> <p><i>Chair, Safety &amp; Risk Management Committee</i></p>	<p>Financial Expert</p> <p><b>Jeffrey C. Purnell, CPA</b> <i>CFO, CSC Applied Technology Div.</i></p> <p><i>Chair, Finance and Audit Committee</i></p>	<p>Operations &amp; Business Management Expert</p> <p><b>John A. Gordon, Gen. USAF (Ret.)</b> <i>Former Administrator, NNSA</i></p> <p><i>Chair, Operations Committee</i></p>	<p>President of Small Business</p> <p><b>William O. (Jack) Silvey</b> <i>President, The Bionetics Corporation</i></p>	<p>JSA, LLC President and Laboratory Director</p> <p><b>Christoph W. Leemann, Ph.D.</b> <i>Laboratory Director, TJNAF</i></p>	<p><b>Legend:</b></p> <ul style="list-style-type: none"> <li><span style="color: green;">■</span> SURA-appointed Member</li> <li><span style="color: pink;">■</span> CSC-appointed Member</li> <li><span style="color: gray;">■</span> Non-voting Member</li> </ul>

