

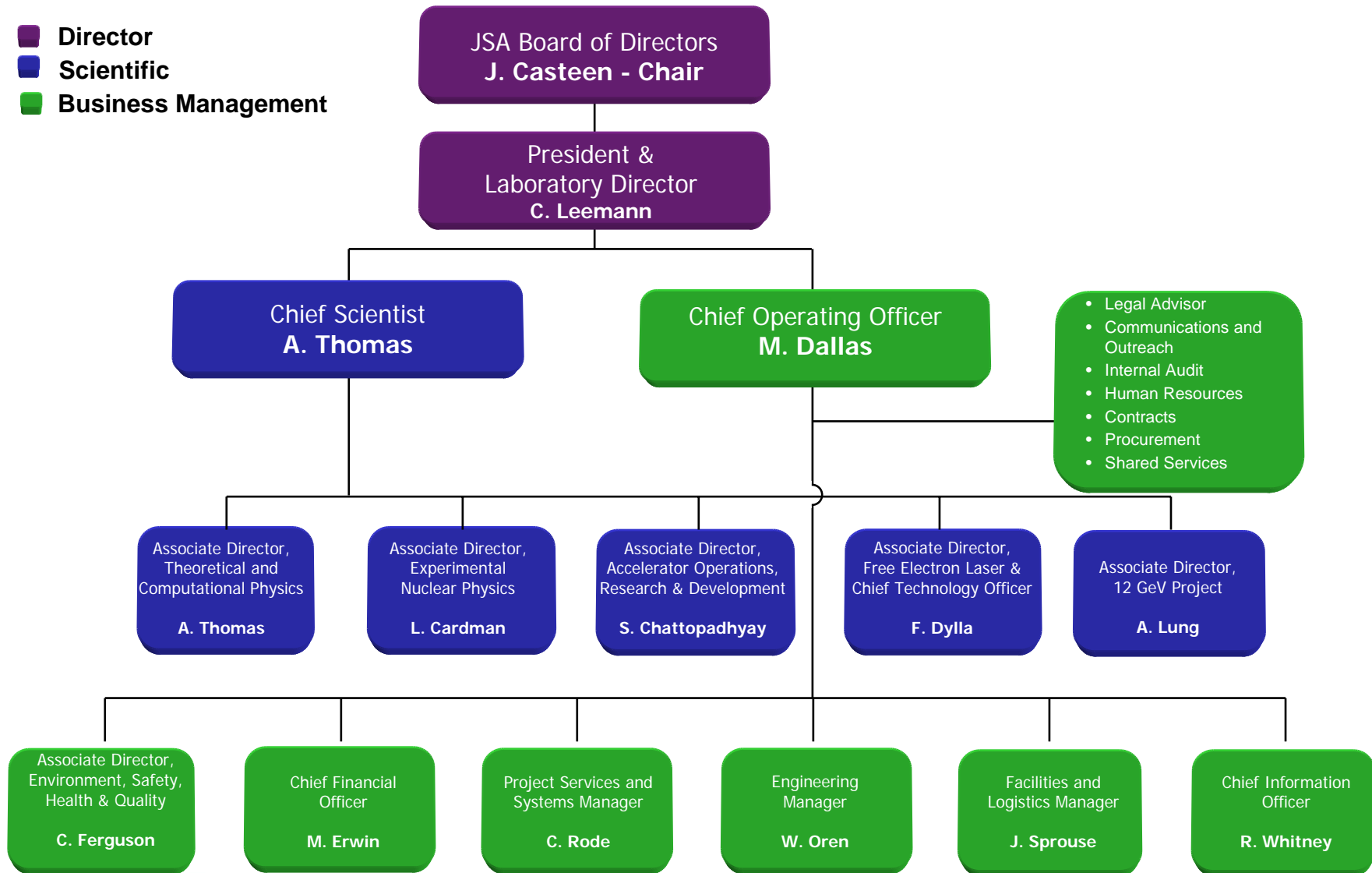
JSA Board of Directors and Committees

<p>CEO of VA Institution Granting Ph.D. in Physics</p> <p>John T. Casteen, Ph. D. <i>President, University of Virginia</i></p> <p><i>Co-chair, Relations & Outreach Committee</i> <i>Chair, JSA Board</i></p>	<p>Chief Executive of SURA</p> <p>Jerry P. Draayer, Ph. D. <i>President & CEO, SURA</i></p> <p><i>Chair, Compensation Committee</i></p>	<p>Eminent Scientist</p> <p>Thomas Appelquist, Ph.D. <i>Professor of Physics, Yale University</i></p> <p><i>Chair, Science Council</i></p>	<p>User Institution Executive</p> <p>William R. Harvey, Ph.D. <i>President, Hampton University</i></p> <p><i>Co-chair, Relations & Outreach Committee</i></p>	<p>Former Government Executive/Lab Director</p> <p>Ernest J. Moniz Ph.D. <i>Former Under Secretary of Energy</i></p>	<p>Member of SURA JLab Committee</p> <p>June L. Matthews, Ph.D. <i>Dir., Laboratory for Nuclear Science, MIT</i></p> <p><i>Chair, Programs Committee</i></p>
<p>Chief Executive, CSC Applied Technology Division</p> <p>Lawrence H. Hare, Ph.D. <i>President, CSC Applied Technology Div.</i></p> <p><i>Chair, Safety & Risk Management Committee</i></p>	<p>Financial Expert</p> <p>Jeffrey C. Purnell, CPA <i>CFO, CSC Applied Technology Div.</i></p> <p><i>Chair, Finance and Audit Committee</i></p>	<p>Operations & Business Management Expert</p> <p>John A. Gordon, Gen. USAF (Ret.) <i>Former Administrator, NNSA</i></p> <p><i>Chair, Operations Committee</i></p>	<p>President of Small Business</p> <p>William O. (Jack) Silvey <i>President, The Bionetics Corporation</i></p>	<p>JSA, LLC President and Laboratory Director</p> <p>Christoph W. Leemann, Ph.D. <i>Laboratory Director, TJNAF</i></p>	<p>Legend:</p> <ul style="list-style-type: none"> ■ SURA-appointed Member ■ CSC-appointed Member ■ Non-voting Member



Organization Structure

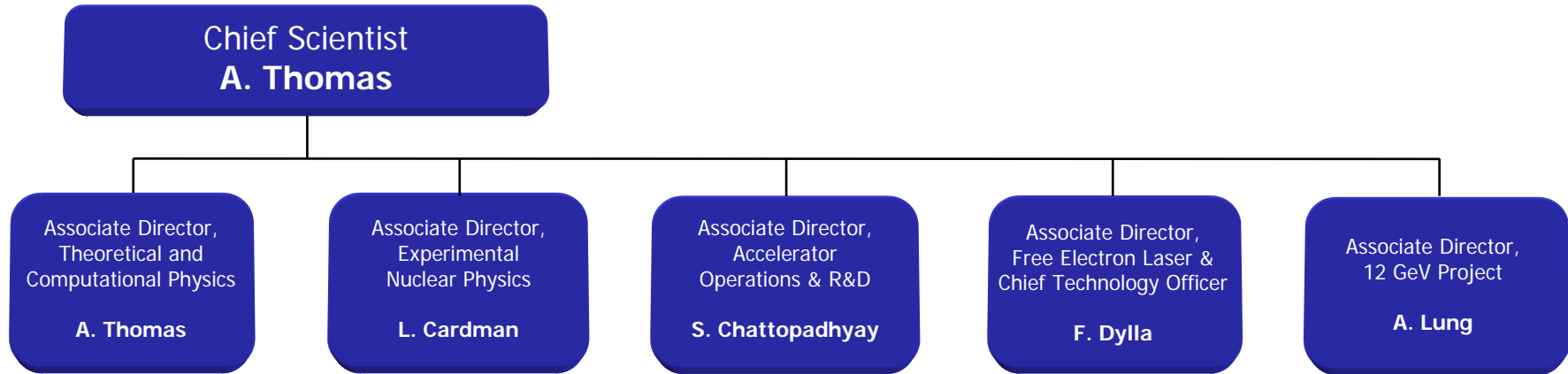
- Director**
- Scientific**
- Business Management**



Thomas Jefferson National Accelerator Facility

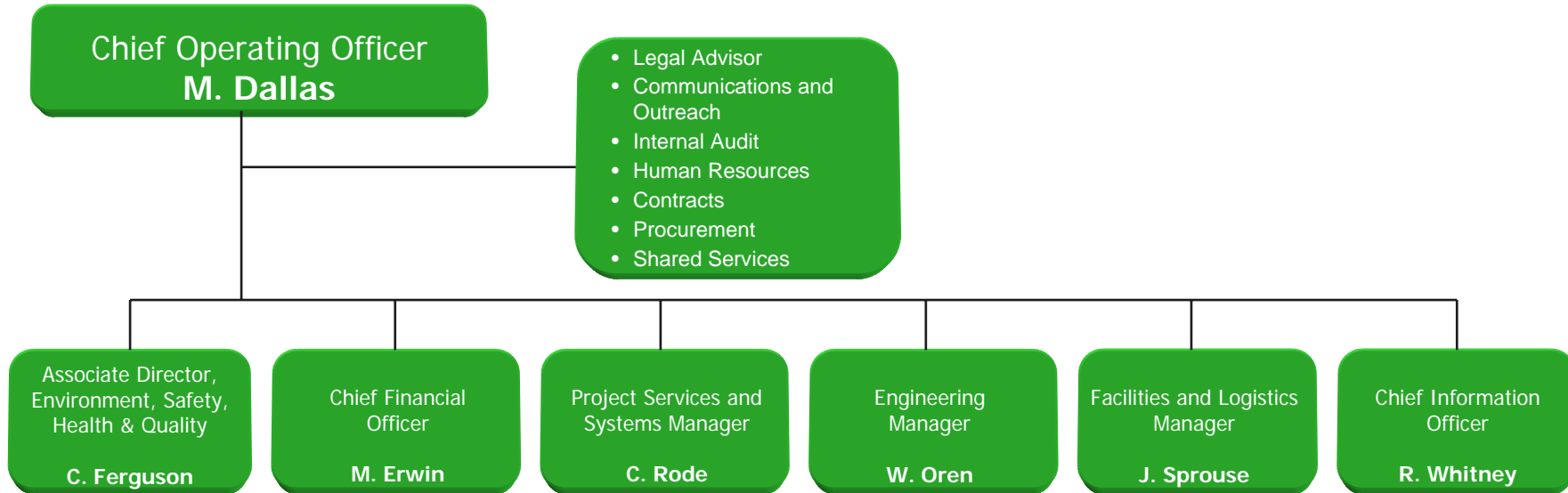


Laboratory Organization - Science



Empowers Chief Scientist to provide overall direction for balanced, highest impact science

Laboratory Organization - *Operations*



Empowers COO to integrate operations and business management functions to deliver highest impact science